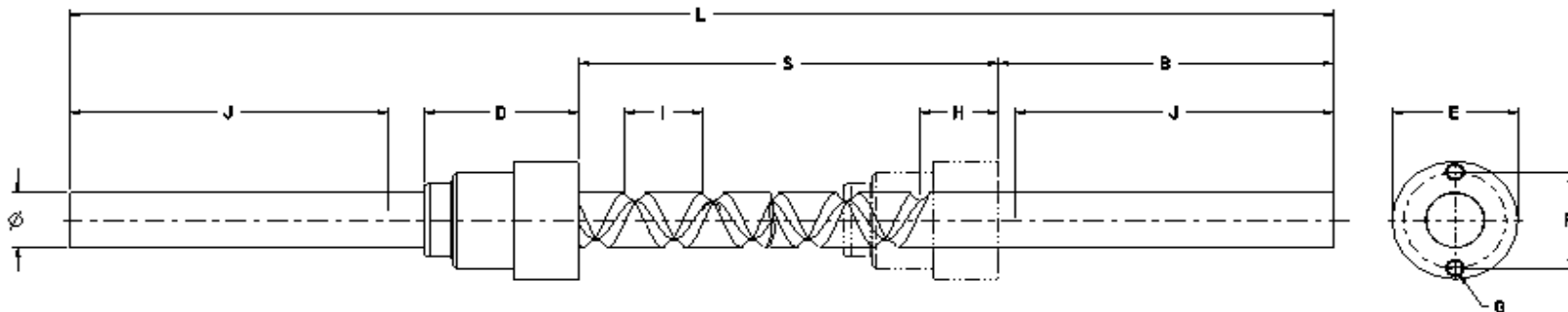


**HTD Aerospace, Inc. - Mechanical Products  
Standard Reverser Sizes**

Series	HTD51600		HTD51700		HTD51800		HTD51900		HTD5200		HTD52100		
	in.	mm	in.	mm	in.	mm	in.	mm	in.	mm	in.	mm	
Shaft Dia.	Ø	.3755/.3720	9.53	.5005/.4970	12.70	.7510/.7470	19.05	1.2525/1.2475	31.75	1.753/1.1747	44.45	2.503/2.497	63.50
Lead	I	0.50	12.70	0.75	19.05	1.00	25.40	1.25	31.75	2.00	50.80	3.00	76.20
Nut Face Offset	B	1.55	39.35	2.06	52.45	4.28	108.71	6.2	157.61	8.05	204.47	8.2	208.41
Anneal Length	J	1.5	38.1	2	50.8	4.06	103.13	6	152.4	7	177.8	8	203.2
Nut Length	D	1.1	28	1.46	37	1.97	50.5	2.95	75	3.94	100	5.31	135
Nut Dia.	E	0.98	25	1.22	31	1.61	41	2.37	60.2	3.25	82.55	4.47	113.5
Nut/Ball Offset	H	0.64	16.25	0.87	22.1	1.22	30.98	1.86	47.24	2.45	62.23	3.23	82.94
Nut BCD	F	0.78	19.8	0.94	23.88	1.31	33.27	1.94	49.28	2.69	68.33	3.75	95.25
Mounting Holes	G	M3		M4		M6		M8		M12		M12	
Stroke	S	(INDEX # * 0.25)-(0.58)		(INDEX # * 0.375)-(0.098)		(INDEX # * 0.50)-(0.124)		(INDEX # * 0.625)-(0.13)		(INDEX # * 1.00)-(0.256)		(INDEX # * 1.50)-(0.496)	
Overall Length	L	S+4.38		S+5.86		S+10.56		S+16.12		S+21.00		S+22.86	
Part Number	Cres Shaft	HTD516xx-10C		HTD517xx-10C		HTD518xx-10C		HTD518xx-10C		HTD520xx-10C		HTD521xx-10C	
	Steel Shaft	HTD516xx-10S		HTD517xx-10S		HTD518xx-10S		HTD518xx-10S		HTD520xx-10S		HTD521xx-10S	



MECHANICAL PRODUCTS  
18 OLD MILL RD.  
REDDING, CT 06896  
(203) 544-8277  
[www.htdaerospace.com](http://www.htdaerospace.com)

INDEX # REPRESENTS 02 TO 99 FOR  
STANDARD UNITS. SPECIALS  
AVAILABLE UPON REQUEST.

**HTD Aerospace, Inc. - Mechanical Products  
Reverser Capacities**

Series	Max. Axial Load		Shaft Dynamic Capacity		Limiting Speed	Inertia Constant
	LBS.	Newtons	LBS.	Newtons	RPM	
<b>HTD51600</b>						
(-10S) Steel Shaft	18	80	53	236	800	3.9
(-10C) Cres Shaft	12	53	33	147	675	
<b>HTD51700</b>						
(-10S) Steel Shaft	30	134	89	396	800	5.8
(-10C) Cres Shaft	22	98	56	249	675	
<b>HTD51800</b>						
(-10S) Steel Shaft	98	434	145	645	800	7.6
(-10C) Cres Shaft	39	173	72	320	540	
<b>HTD51900</b>						
(-10S) Steel Shaft	282	1254	392	1744	600	10.2
(-10C) Cres Shaft	120	534	197	875	340	
<b>HTD52000</b>						
(-10S) Steel Shaft	593	2638	710	3158	500	13.9
(-10C) Cres Shaft	240	1068	356	1583	240	
<b>HTD52100</b>						
(-10S) Steel Shaft	1100	4893	1214	5400	300	18.0
(-10C) Cres Shaft	427	1899	609	2708	160	



**HTD Aerospace, Inc.**

*A Triumph Group Company*